

LANDSCAPE

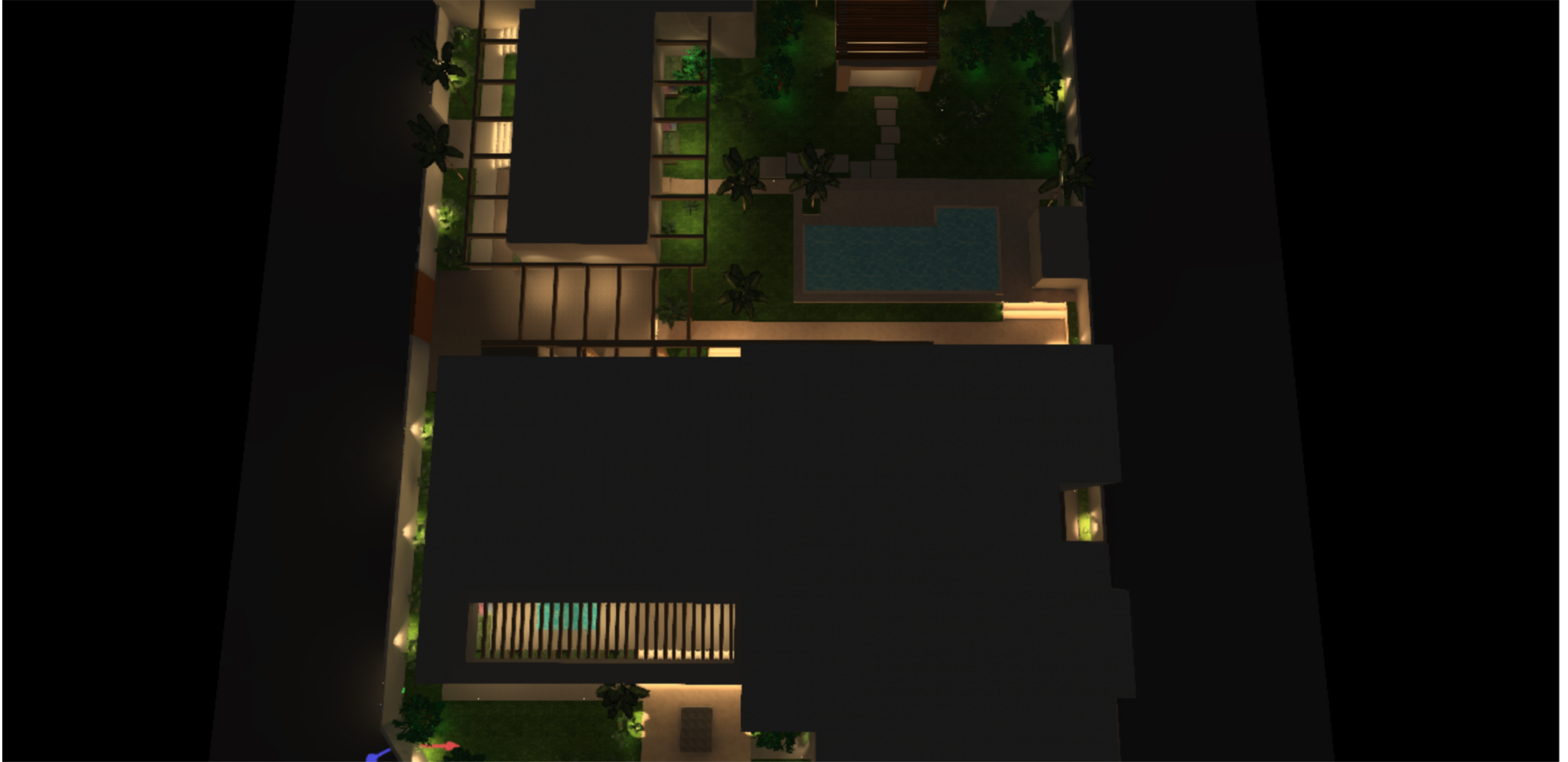
Table of Contents

Cover	1
Table of Contents	2
Images	3

Product data sheets

NEKO - CAMPSBAY Single-830-45° (1x LED)	33
NEKO - DURBAN-830 (1x LED)	34
NEKO - NEPTUNE XSU CV-830-30° (1x 3000K)	35
NEKO- LED Underground Light (1x TERARACE TEMI 5.5W 30°3000K)	36
NEKO - LED Underground Light (1x TERARACE TENA 2W 30°3000K)	37
NEKO- LED Wall washer Light (1x LED 6W 3000K / 20x40°)	38
NEKO - LED-Lamps (1x SL2835A/IP65 6W 500mm 3000K)	39
NEKO - LED-Lamps (1x SL2835A/IP65 6W 500mm 3000K)	40
NEKO- LED-Spotlight (1x AFTER7 AFMI DN 5.5W 30°3000K 500lm)	41
NEKO - LED-Spotlight (1x SKYSURFER SSRC 10W-3000K/36°)	42

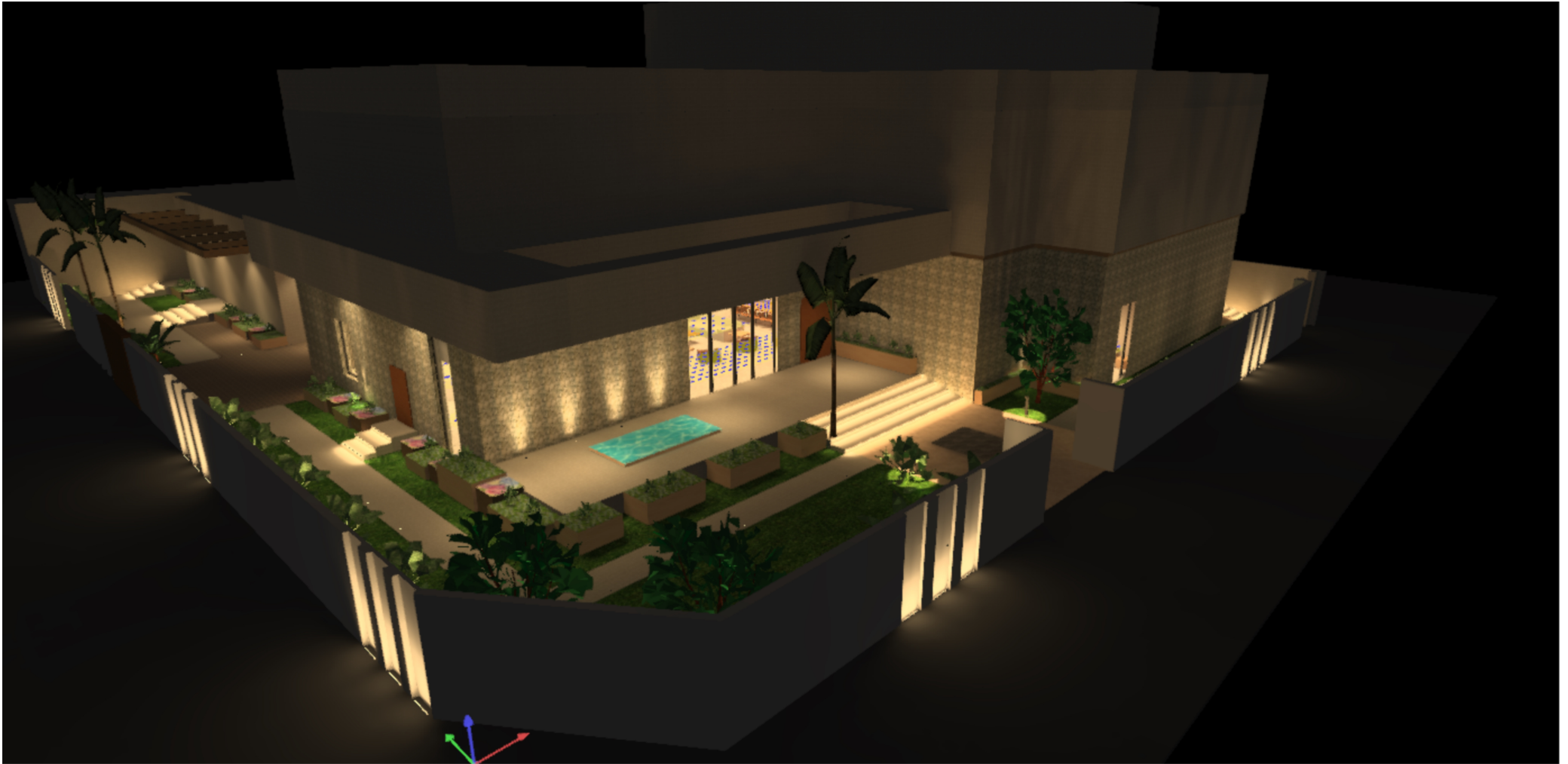
Images



Images



Images



Images



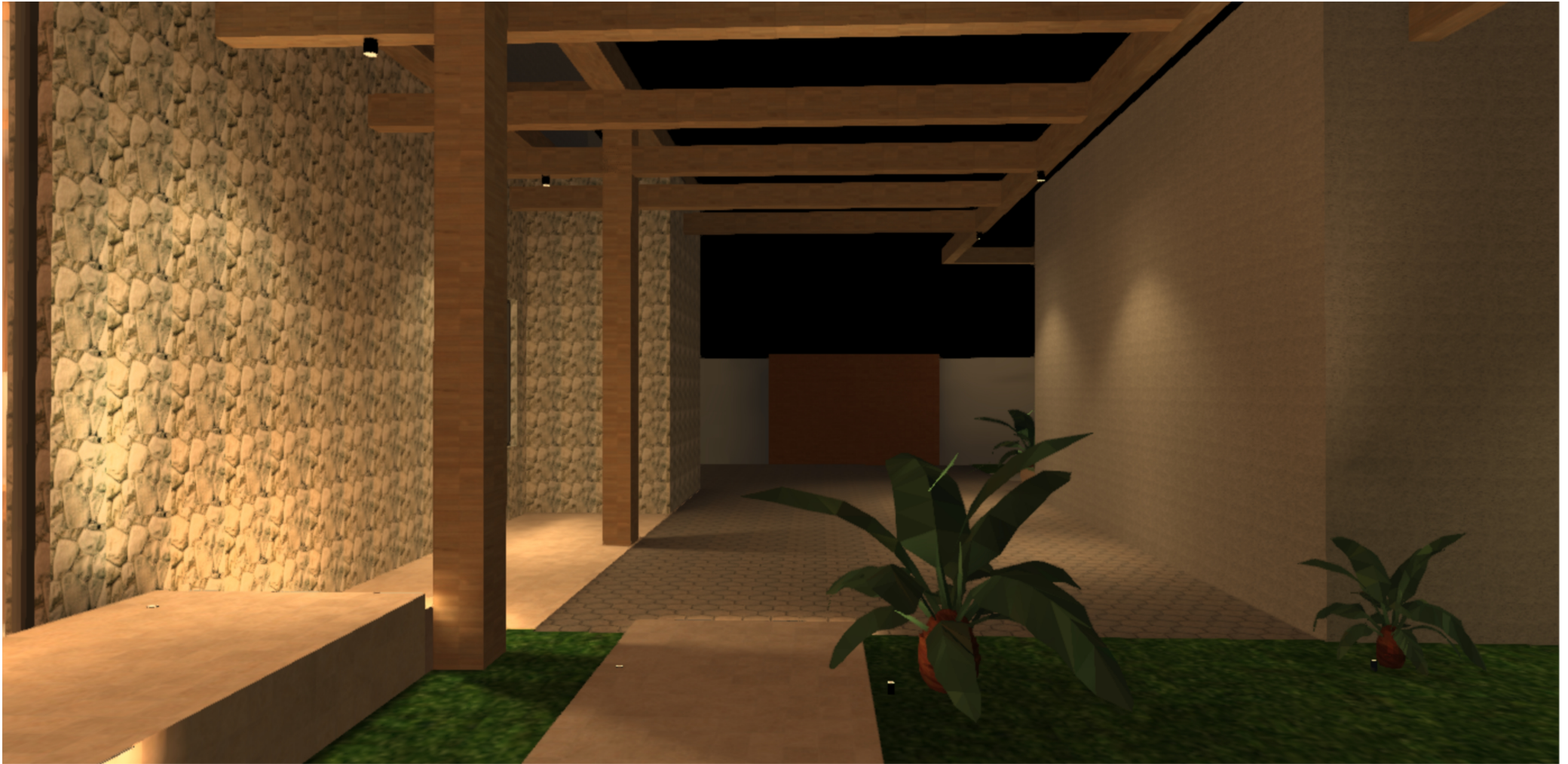
Images



Images



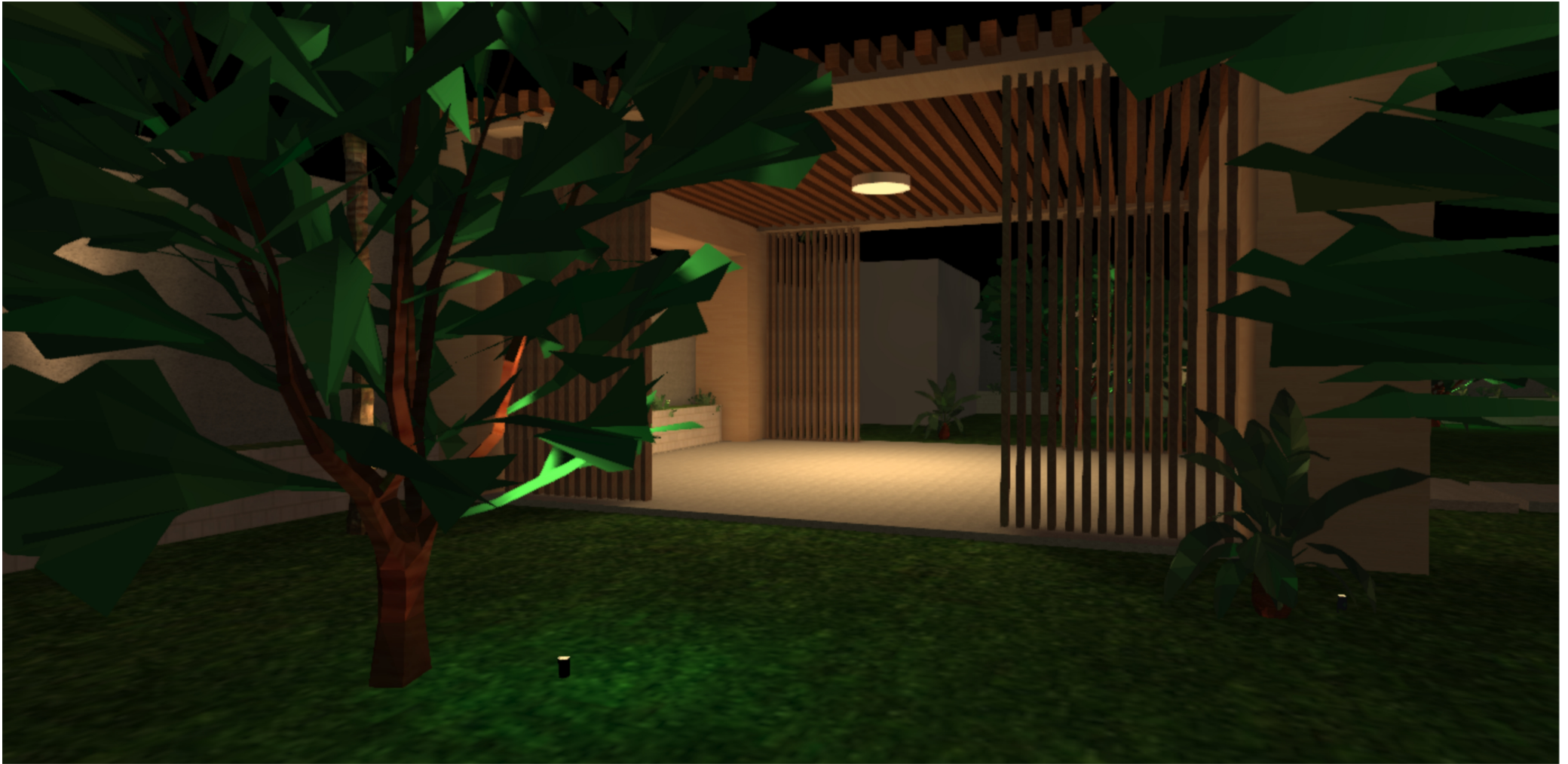
Images



Images



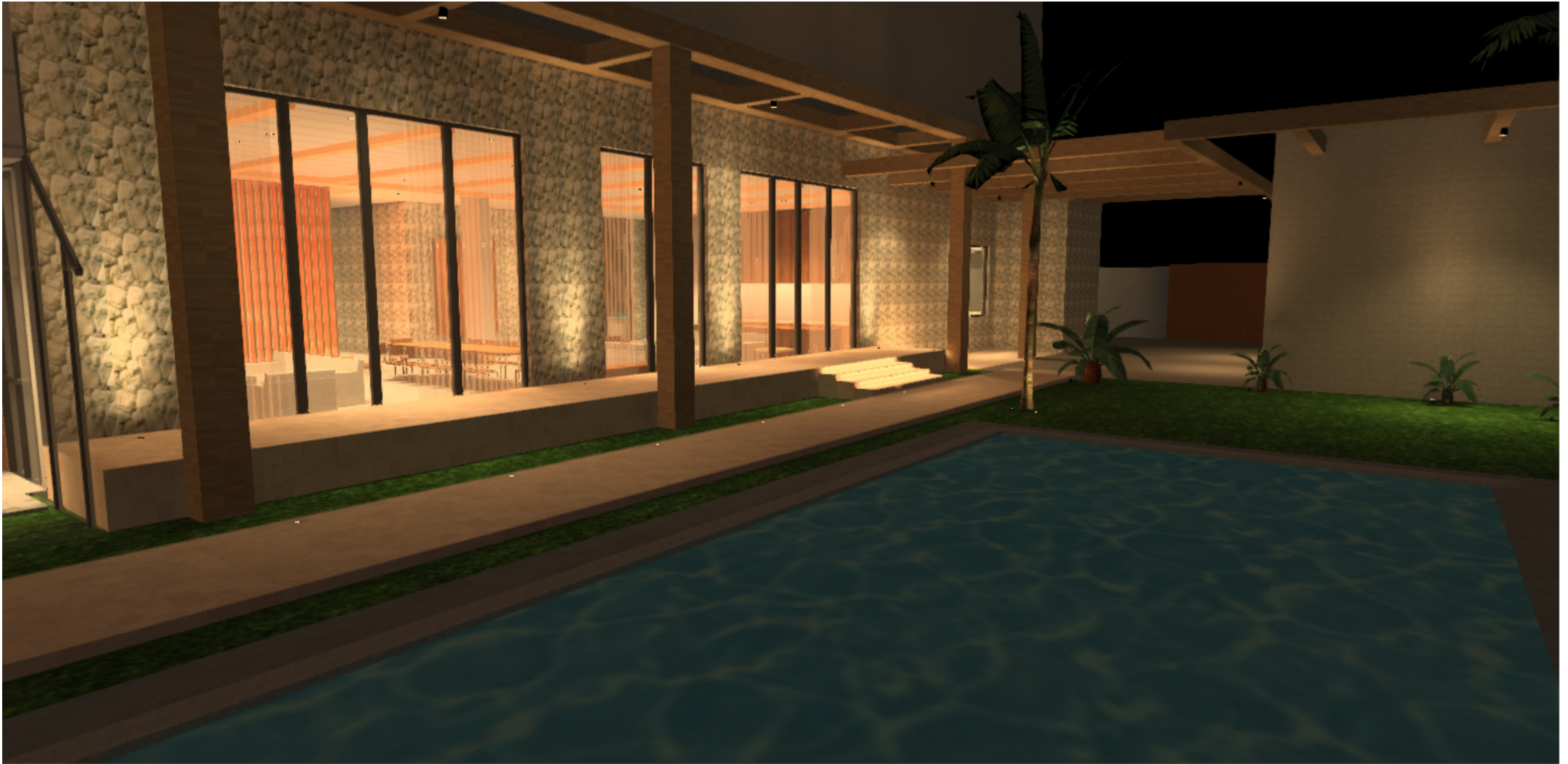
Images



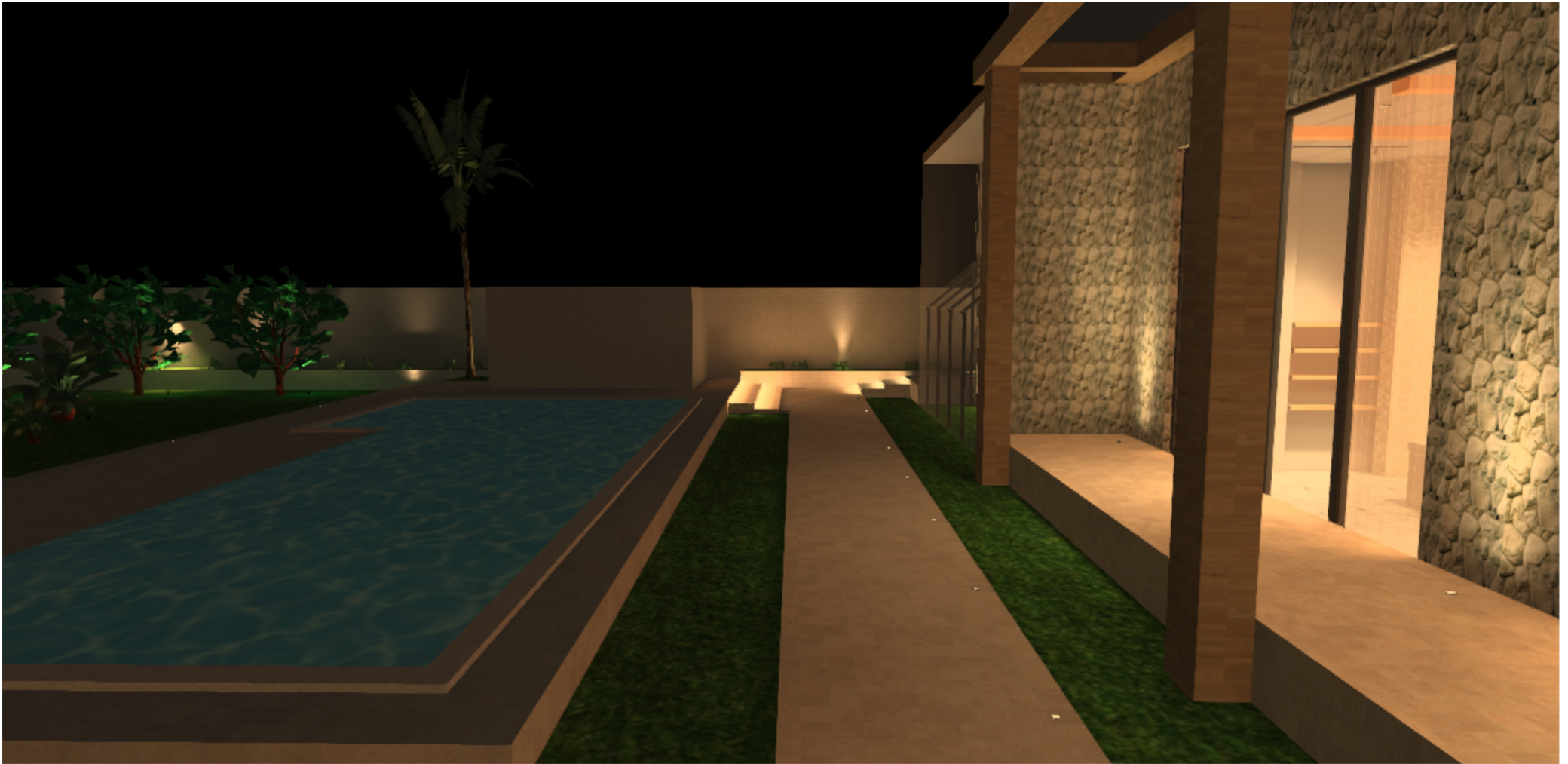
Images



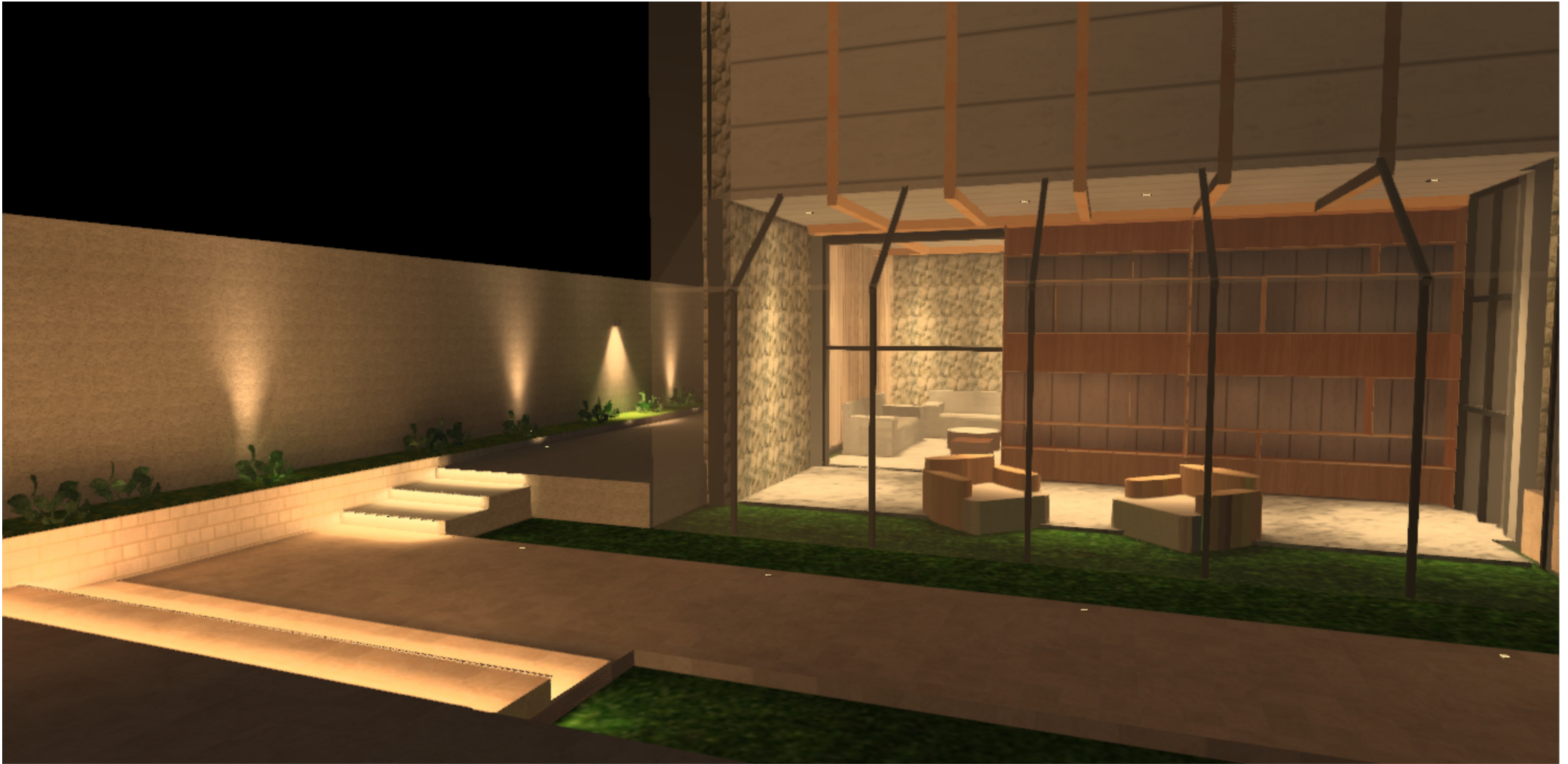
Images



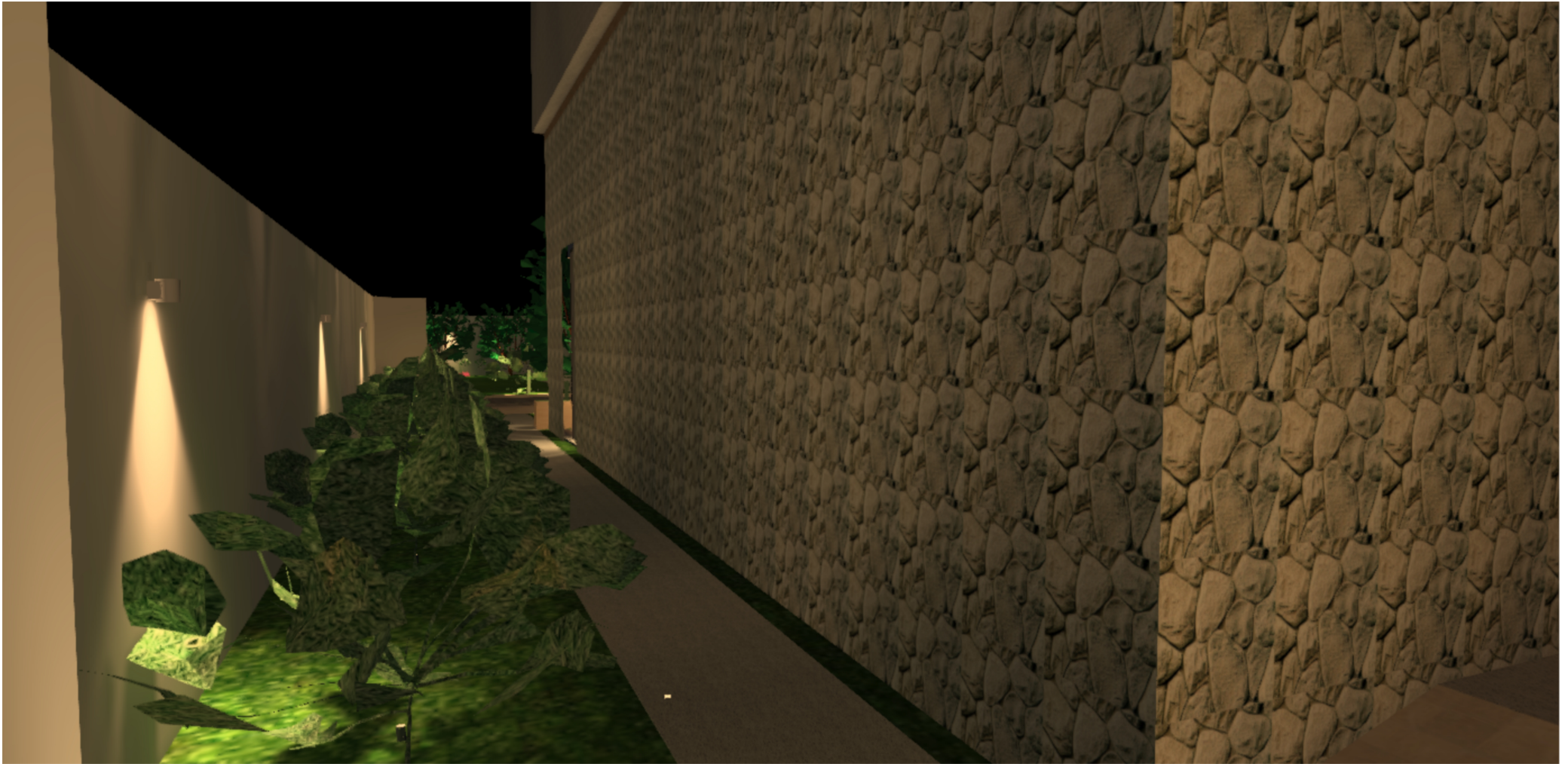
Images



Images



Images



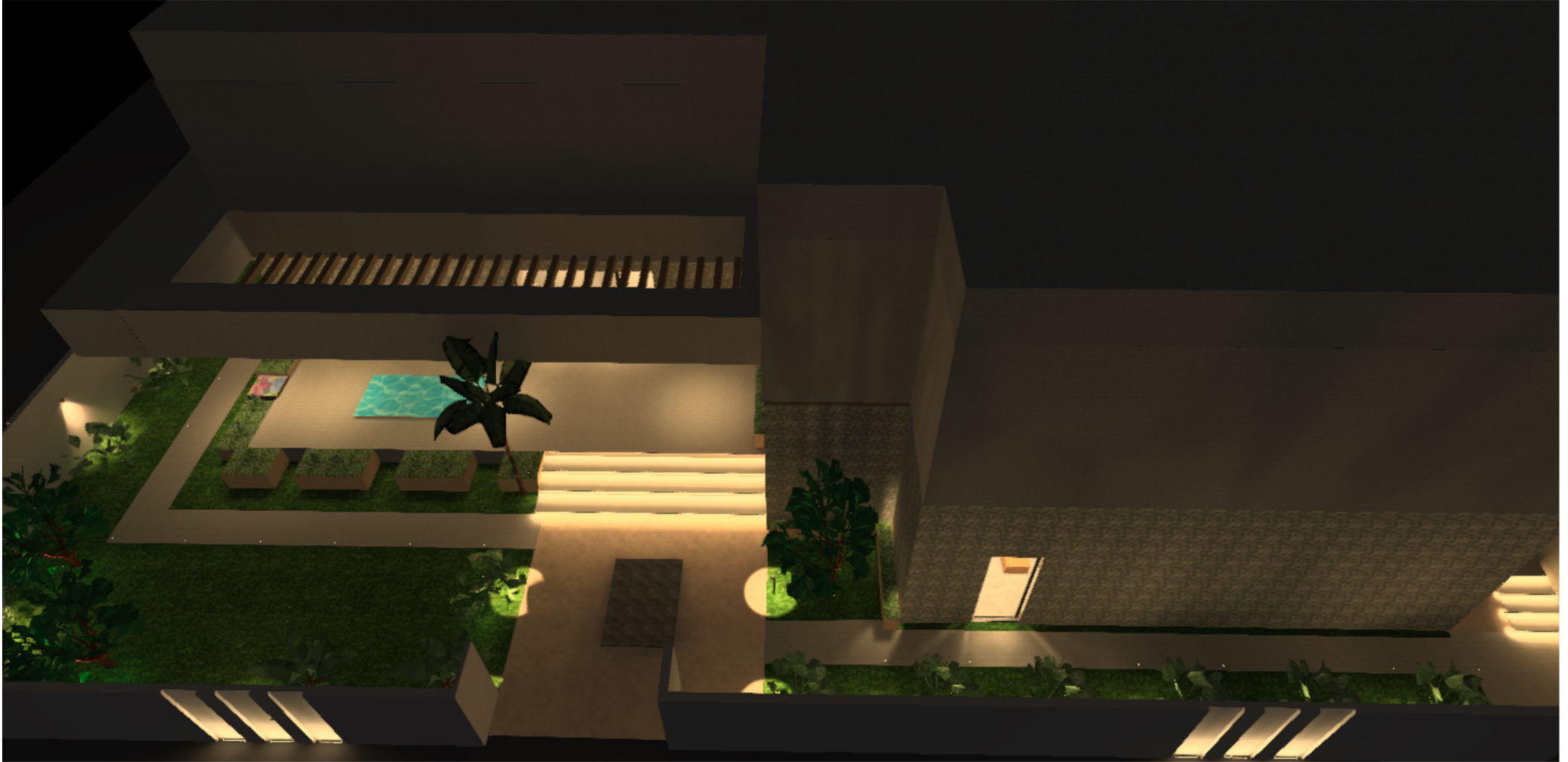
Images



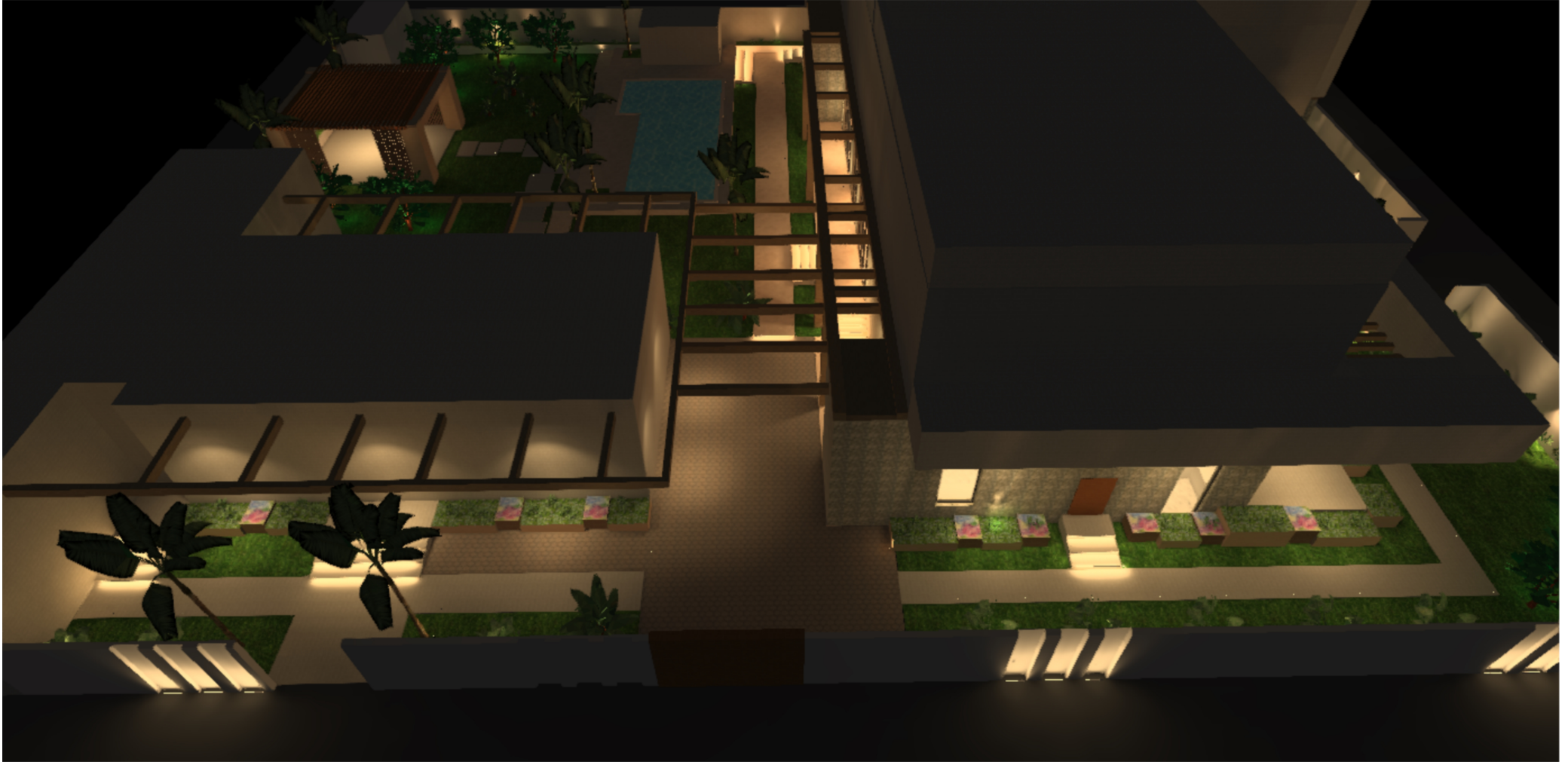
Images



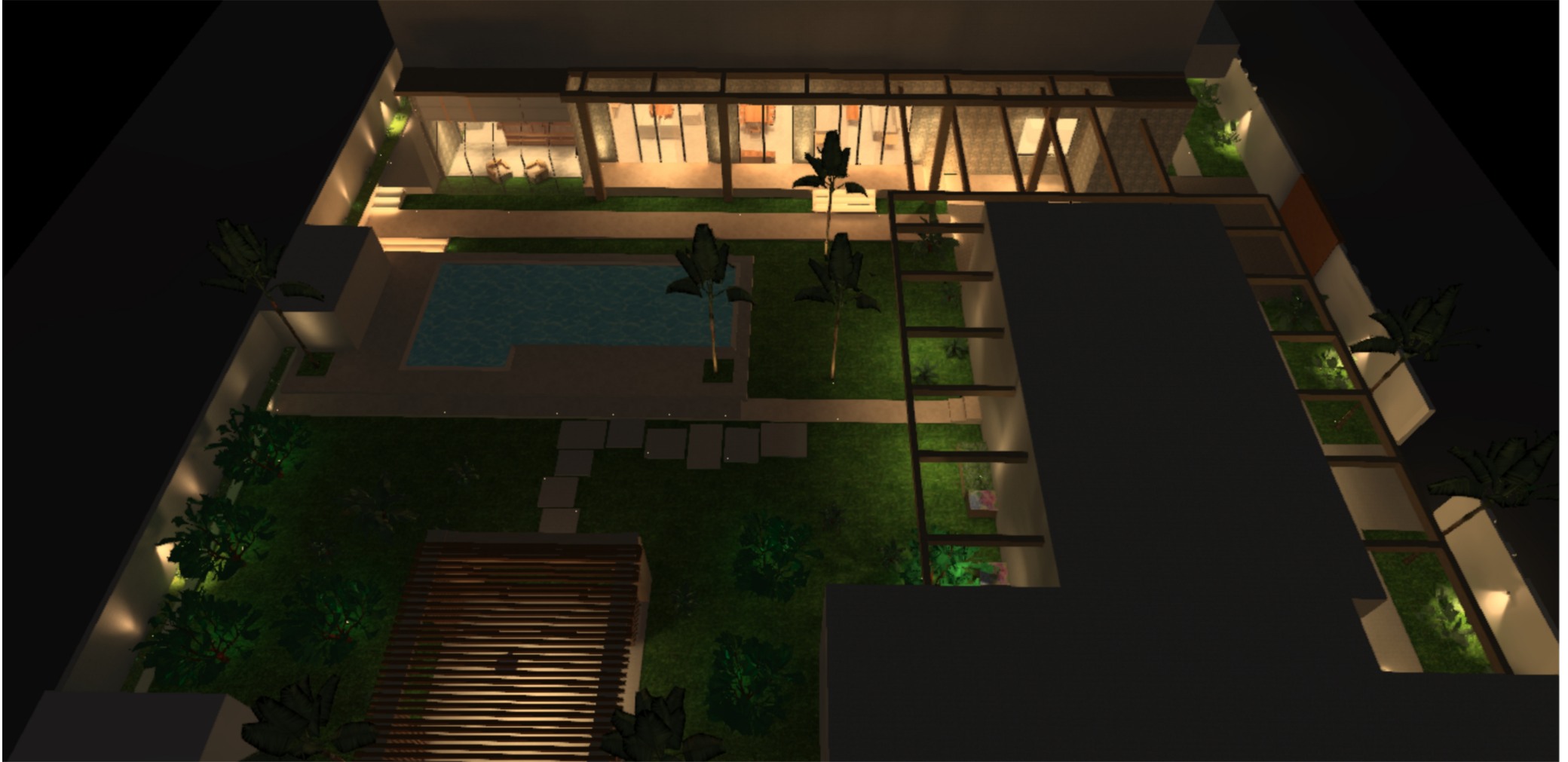
Images



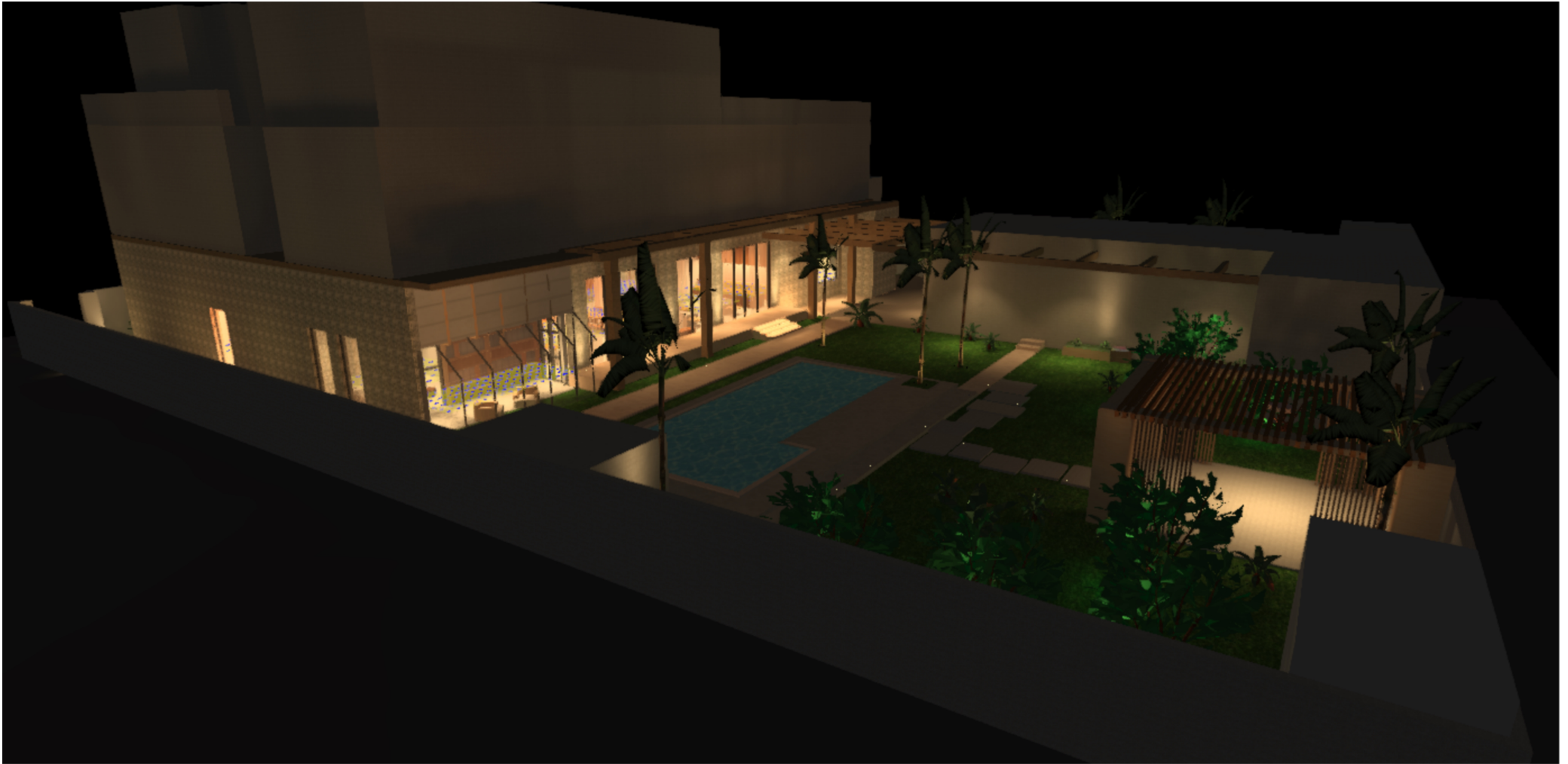
Images



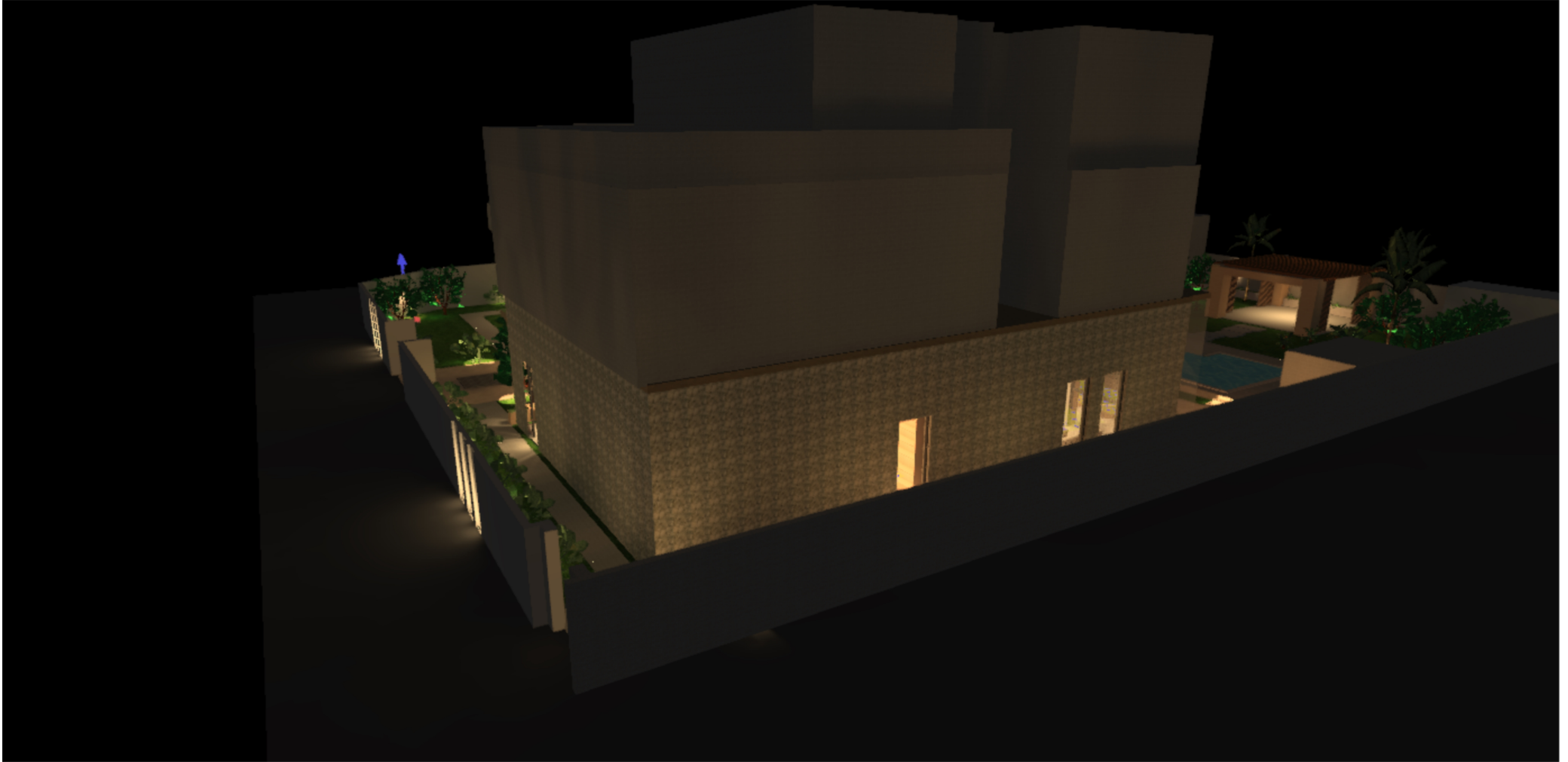
Images



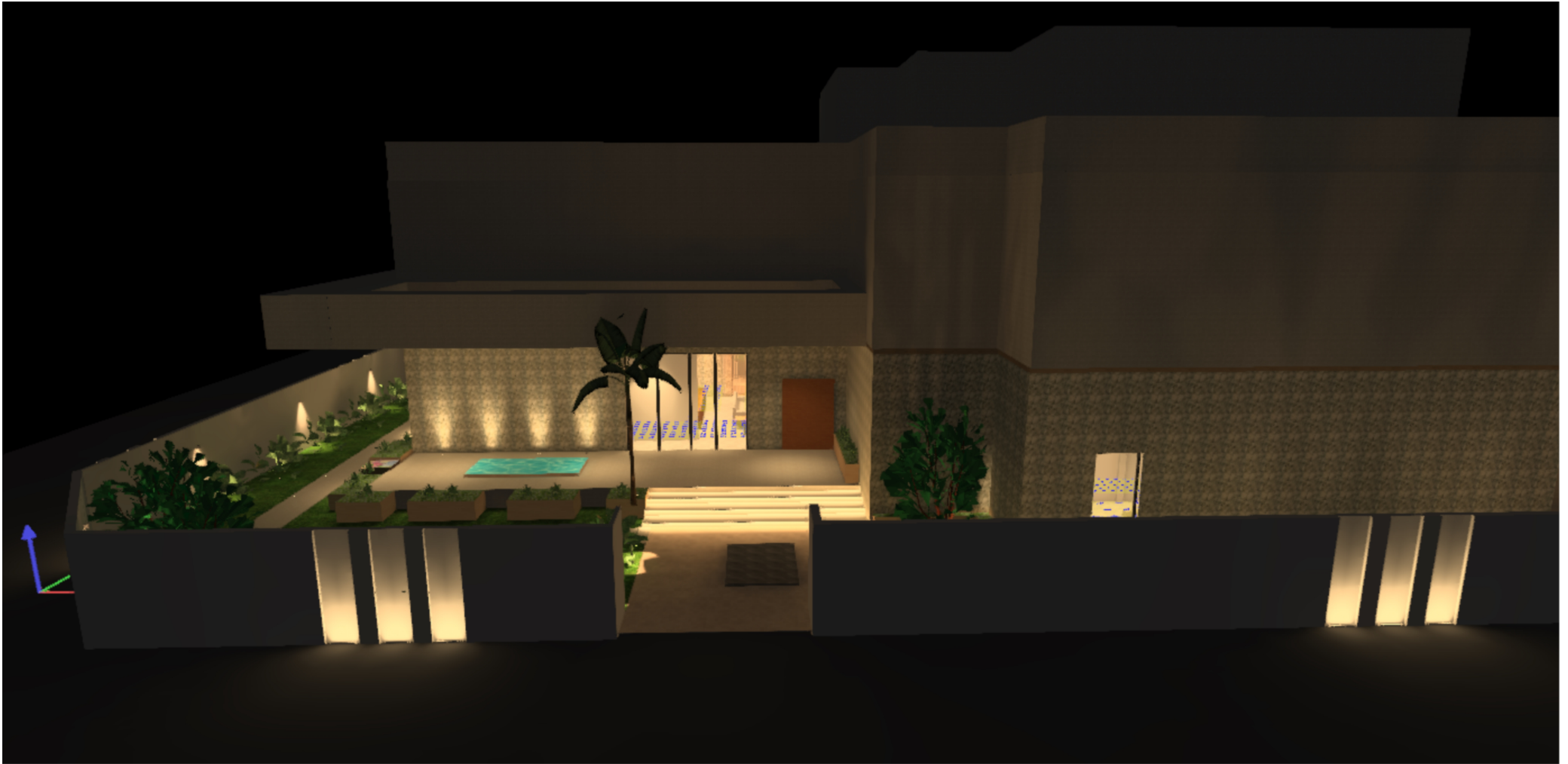
Images



Images



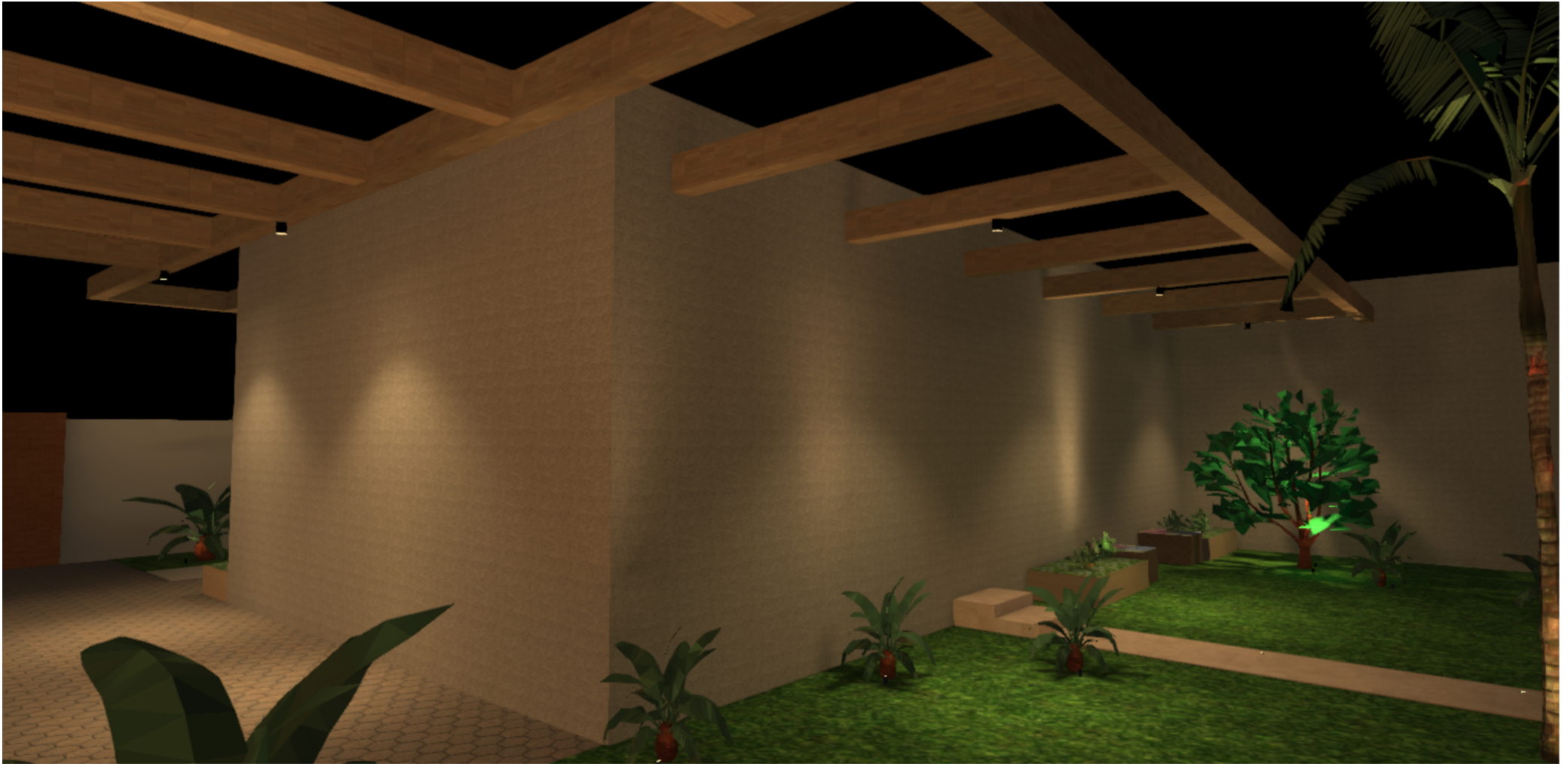
Images



Images



Images



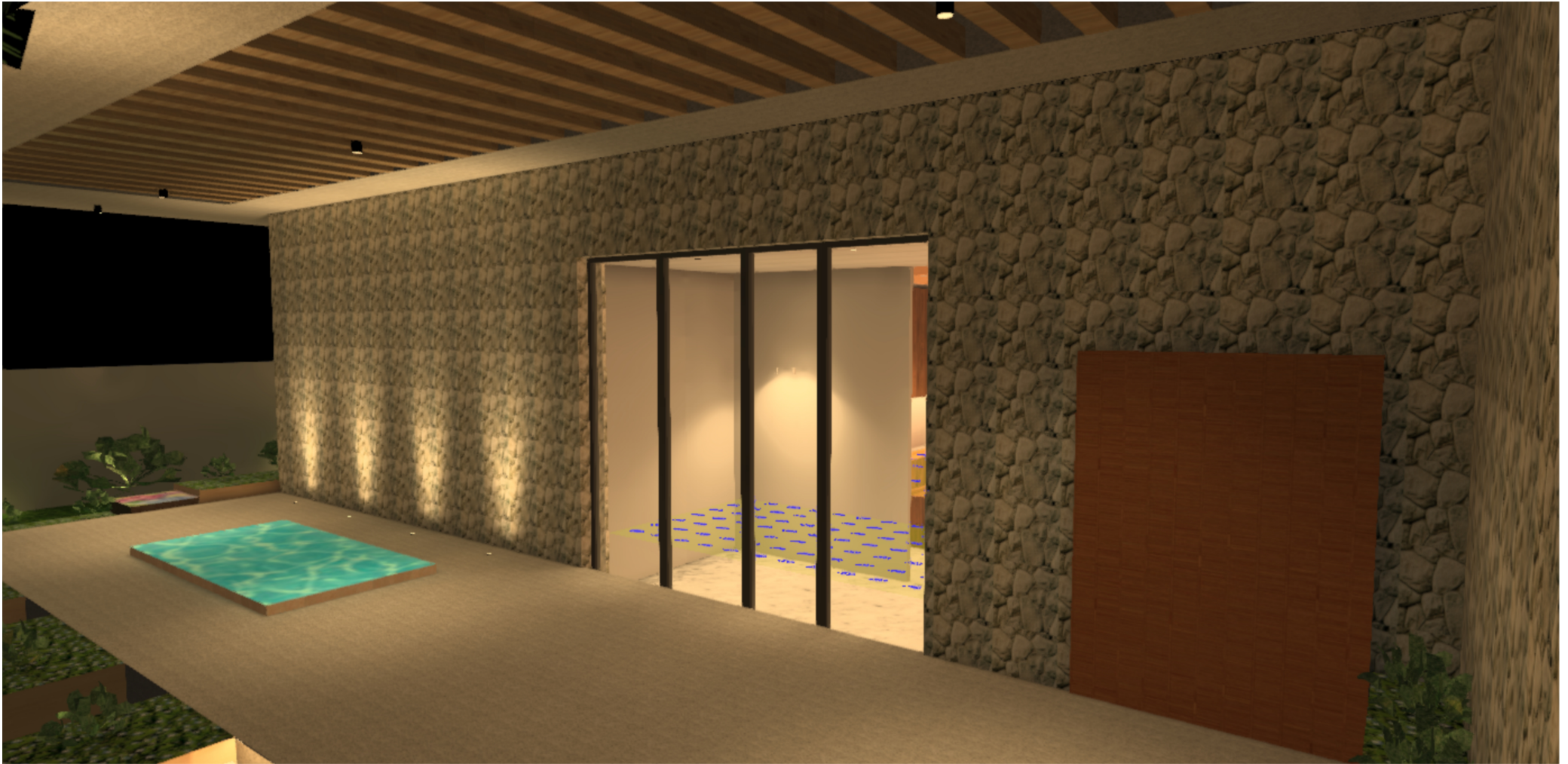
Images



Images



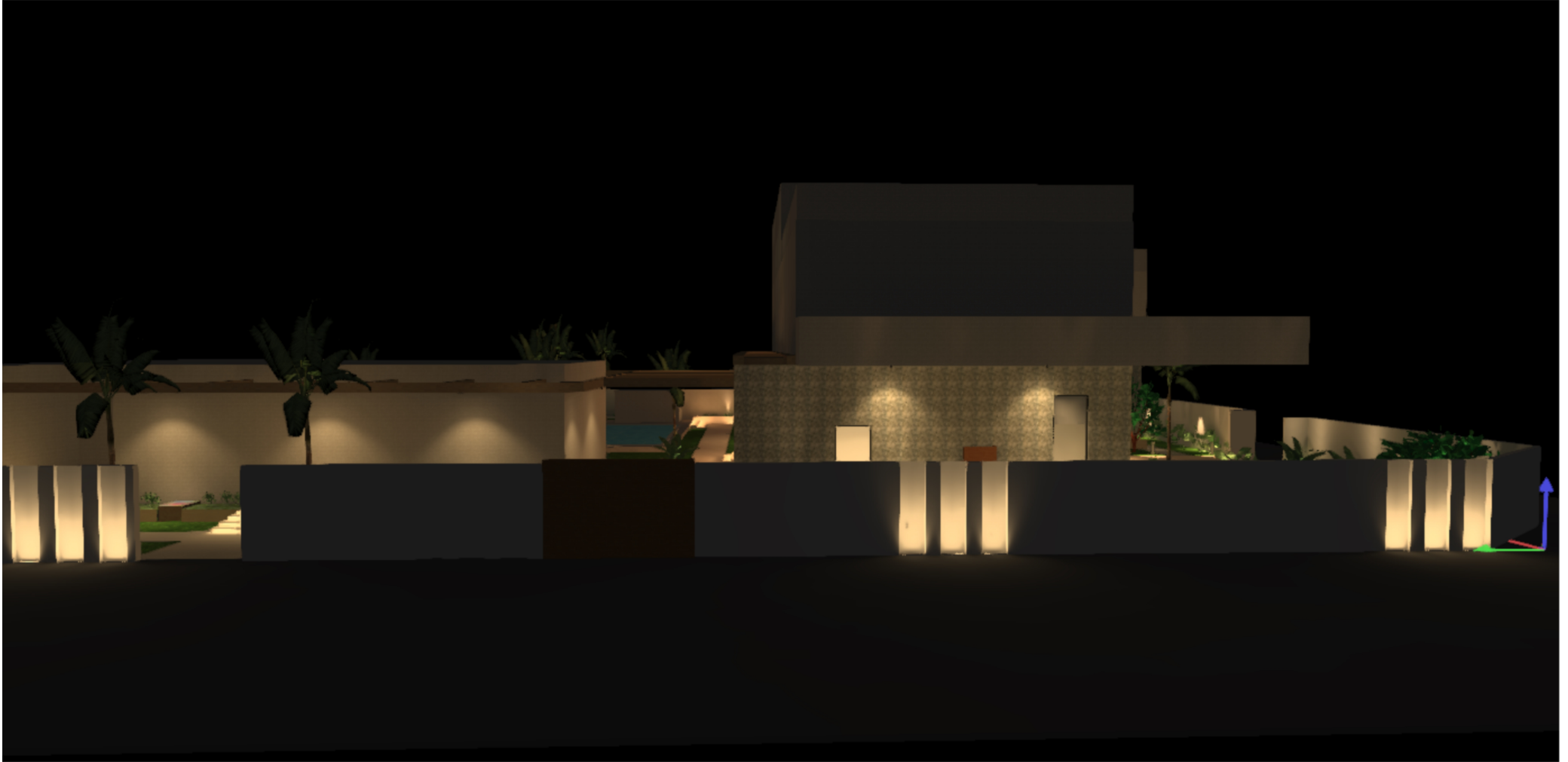
Images



Images



Images



Images

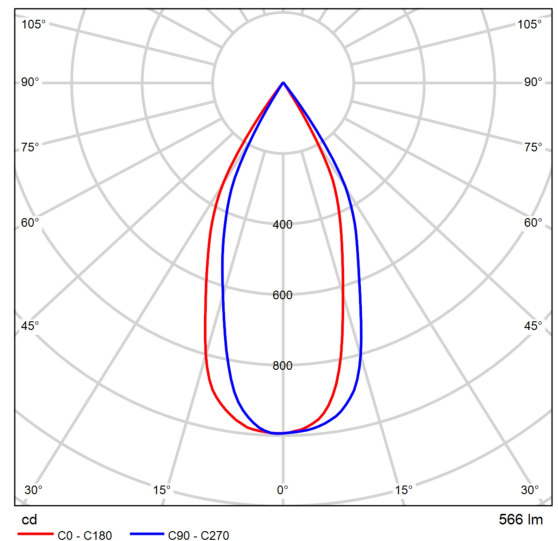


Product data sheet

NEKO - CAMPSBAY Single-830-45°



Article No.	CAMPSBAY
P	6.4 W
$\Phi_{\text{Luminaire}}$	566 lm
Luminous efficacy	88.7 lm/W
CCT	2913 K
CRI	92

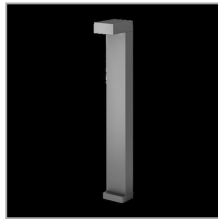


Polar LDC

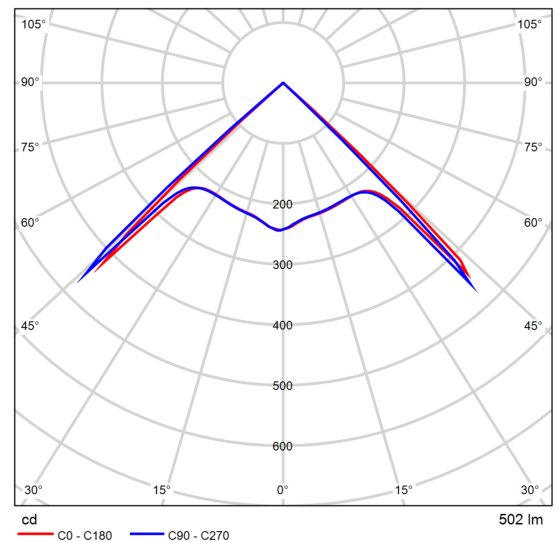
Wall Light round made of die-cast aluminium with integrated ON-OFF Driver; dark-grey powder-coating finish (RAL 7024); LED 5W; measurements Ø80mm x 106mm; height of the luminaire is 90mm; luminaire's weight is approximately 480g; CCT 3000K with a System Output of 500lm; decent color rendering at an index of CRI80; after a lifetime of 50000h min. 80% of the luminous flux with energy efficient EDISON LED Chips; 3 years warranty; beam characteristic with 45° beam angle; degree of housing protection according to DIN EN 60529 (IP65); Impact resistance of the luminaire is in the class IK07;

Product data sheet

NEKO - DURBAN-830



Article No.	DURBAN Series
P	6.1 W
$\Phi_{\text{Luminaire}}$	502 lm
Luminous efficacy	82.6 lm/W
CCT	2913 K
CRI	92



Polar LDC

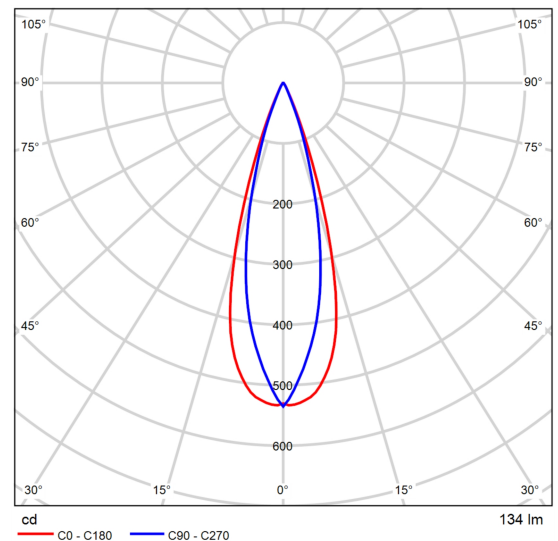
Bollard square made of die-cast aluminium with integrated ON-OFF Driver; dark-grey powder-coating finish (RAL 7024); LED 5W; measurement 128mm x 90mm; height of the luminaire is 700mm; CCT 3000K with an System Output of 450lm; decent color rendering at an index of CRI80; after a lifetime of 50000h min. 80% of the luminous flux with energy efficient CREE LED Chips; 3 years warranty; beam characteristic with 90° beam angle; degree of housing protection according to DIN EN 60529 (IP65); Impact resistance of the luminaire is in the class IK07.

Product data sheet

NEKO - NEPTUNE XSU CV-830-30°

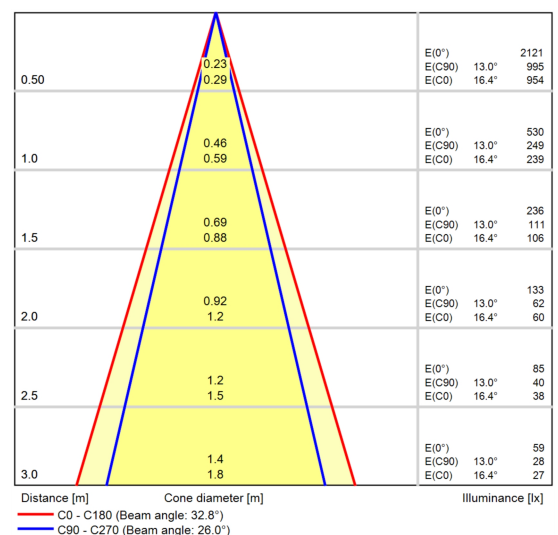


Article No.	NEPTUNE Series
P	3.8 W
$\Phi_{\text{Luminaire}}$	134 lm
Luminous efficacy	35.0 lm/W
CCT	3000 K
CRI	92



Polar LDC

Projector Light round made of die-cast aluminium; external 24VDC LED Driver is required; Compatible with On-Off/ Phase Dim/ 1-10V Dim/ DALI Dim Remote 24VDC LED Driver, Dimming Range: 5%-100% ; dark-grey (RAL 7024); triple layer coating finish for high corrosion and UV resistance; chemical conversion coating on the aluminium surface followed by the first layer of anodising; second layer of epoxy paint; third polyester powder; salt spray test passed over 1000 hours; System Power 4W; dimensions Ø34mm x 63mm; CCT 3000K with an System Output of 150lm; decent color rendering at an index of CRI80; after a lifetime of 50000h L80B10 min. 80% of the luminous flux with energy efficient OSRAM LED Chips; 5 years warranty; beam characteristic with 30° beam angle; UGR<19; degree of housing protection IP67; light source replaceable by a qualified electrician; driver replaceable by a qualified electrician; including installation stake.



Cone diagram

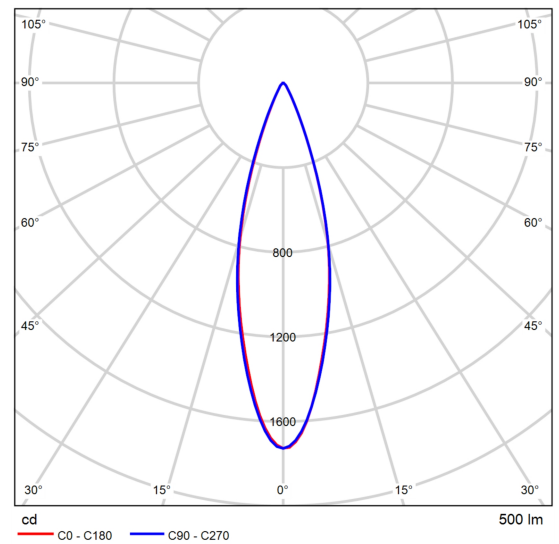
Product data sheet

NEKO - LED Underground Light



Article No.	TERARACE TEMI 5.5W 30°3000K
P	5.5 W
$\Phi_{\text{Luminaire}}$	500 lm
Luminous efficacy	90.9 lm/W
CCT	3000 K
CRI	80

Specification



Polar LDC

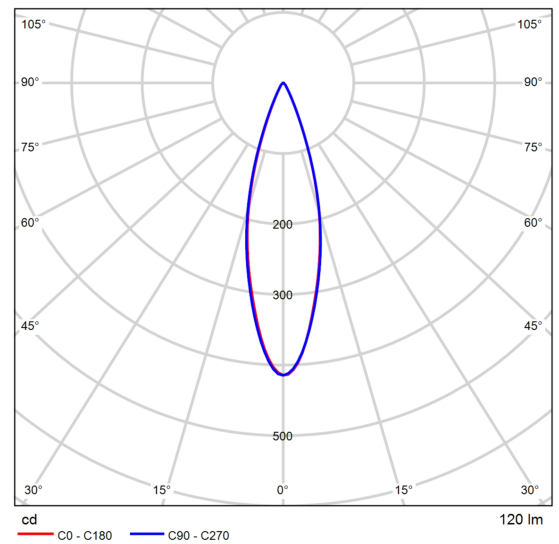
Product data sheet

NEKO - LED Underground Light



Article No.	TERARACE TENA 2W 30°3000K
P	2.0 W
$\Phi_{\text{Luminaire}}$	120 lm
Luminous efficacy	60.0 lm/W
CCT	3000 K
CRI	90

Specification



Polar LDC

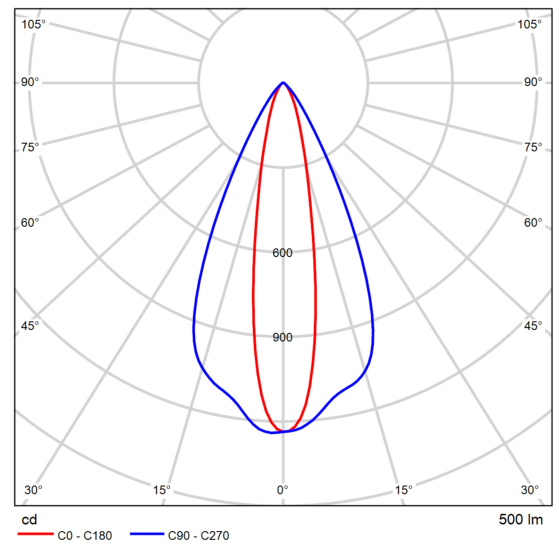
Product data sheet

NVC - LED Wall washer Light



Article No.	NFLED1002 6W- 3000K/20x40°500m m
P	6.0 W
$\Phi_{\text{Luminaire}}$	500 lm
Luminous efficacy	83.3 lm/W
CCT	3000 K
CRI	80

Description



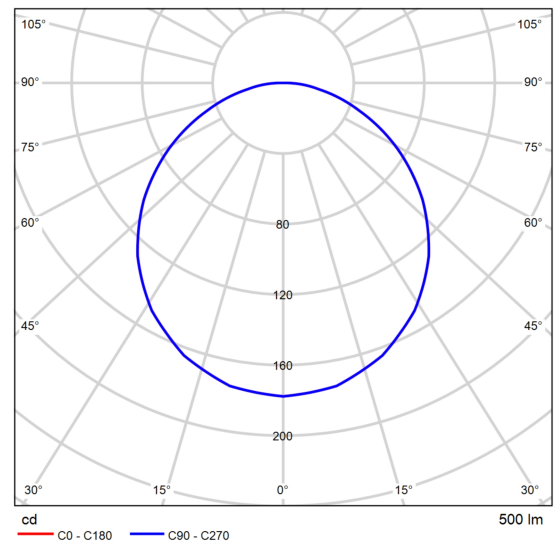
Polar LDC

Product data sheet

NEKO- LED-Lamps



Article No.	SL2835A/IP65 3W 500mm 3000K
P	3.0 W
$\Phi_{\text{Luminaire}}$	200 lm
Luminous efficacy	66.7 lm/W
CCT	3000 K
CRI	90



Polar LDC

Specification

Glare evaluation according to UGR												
p Ceiling		70	70	50	50	30	70	70	50	50	30	
p Walls		50	30	50	30	30	50	30	50	30	30	
p Floor		20	20	20	20	20	20	20	20	20	20	
Room size X Y		Viewing direction at right angles to lamp axis					Viewing direction parallel to lamp axis					
2H	2H	22.9	24.2	23.2	24.5	24.7	23.5	24.8	23.8	25.1	25.3	
	3H	24.1	25.4	24.5	25.6	25.9	25.0	26.2	25.3	26.5	26.8	
	4H	24.6	25.8	25.0	26.1	26.4	25.6	26.8	25.9	27.1	27.4	
	6H	24.9	26.0	25.3	26.3	26.6	26.1	27.2	26.4	27.5	27.8	
	8H	25.0	26.1	25.4	26.4	26.7	26.3	27.3	26.6	27.6	28.0	
4H	12H	25.1	26.1	25.4	26.4	26.7	26.4	27.4	26.8	27.8	28.1	
	2H	23.5	24.7	23.8	25.0	25.3	24.0	25.2	24.3	25.5	25.8	
	3H	25.0	26.0	25.3	26.3	26.6	25.7	26.7	26.1	27.0	27.3	
	4H	25.6	26.5	26.0	26.8	27.2	26.4	27.3	26.8	27.7	28.0	
	6H	26.0	26.8	26.4	27.1	27.5	27.0	27.8	27.4	28.2	28.6	
8H	8H	26.1	26.8	26.5	27.2	27.7	27.2	28.0	27.7	28.4	28.8	
	12H	26.2	26.9	26.6	27.3	27.7	27.4	28.1	27.9	28.5	29.0	
	4H	25.8	26.6	26.3	27.0	27.4	26.6	27.3	27.0	27.7	28.2	
	6H	26.4	27.0	26.8	27.4	27.9	27.3	27.9	27.8	28.3	28.8	
	8H	26.6	27.1	27.1	27.6	28.0	27.6	28.2	28.1	28.6	29.1	
12H	12H	26.7	27.2	27.2	27.7	28.2	27.9	28.4	28.4	28.9	29.4	
	4H	25.8	26.5	26.3	26.9	27.4	26.6	27.3	27.0	27.7	28.1	
	6H	26.4	27.0	26.9	27.4	27.9	27.3	27.9	27.8	28.3	28.8	
	8H	26.7	27.1	27.2	27.6	28.1	27.7	28.2	28.2	28.6	29.1	
	Variation of the observer position for the luminaire distances S											
S = 1.0H		+0.1 / -0.2					+0.1 / -0.1					
S = 1.5H		+0.3 / -0.5					+0.2 / -0.3					
S = 2.0H		+0.5 / -0.9					+0.5 / -0.6					
Standard table		BK05					BK06					
Correction summand		9.2					10.7					
Corrected glare indices referring to 500lm Total luminous flux												

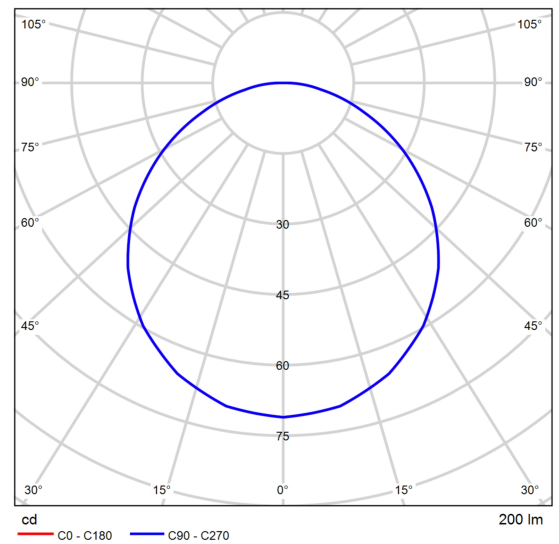
UGR diagram (SHR: 0.25)

Product data sheet

NEKO - LED-Lamps



Article No.	SL2835A/IP65 3W 200mm 3000K
P	3.0 W
$\Phi_{\text{Luminaire}}$	200 lm
Luminous efficacy	66.7 lm/W
CCT	3000 K
CRI	90



Polar LDC

Specification

Glare evaluation according to UGR												
p Ceiling		70	70	50	50	30	70	70	50	50	30	
p Walls		50	30	50	30	30	50	30	50	30	30	
p Floor		20	20	20	20	20	20	20	20	20	20	
Room size X Y		Viewing direction at right angles to lamp axis					Viewing direction parallel to lamp axis					
2H	2H	19.7	21.0	20.0	21.3	21.5	20.3	21.7	20.6	21.9	22.1	
	3H	20.9	22.2	21.3	22.5	22.7	21.8	23.0	22.1	23.3	23.6	
	4H	21.4	22.6	21.8	22.9	23.2	22.4	23.6	22.8	23.9	24.2	
	6H	21.7	22.8	22.1	23.1	23.5	22.9	24.0	23.3	24.3	24.6	
	8H	21.8	22.9	22.2	23.2	23.5	23.1	24.1	23.4	24.4	24.8	
4H	12H	21.9	22.9	22.3	23.2	23.6	23.2	24.2	23.6	24.6	24.9	
	2H	20.3	21.5	20.7	21.8	22.1	20.8	22.0	21.2	22.3	22.6	
	3H	21.8	22.8	22.2	23.1	23.4	22.5	23.5	22.9	23.8	24.2	
	4H	22.4	23.3	22.8	23.6	24.0	23.2	24.1	23.6	24.5	24.9	
	6H	22.8	23.6	23.2	24.0	24.4	23.8	24.6	24.2	25.0	25.4	
8H	8H	22.9	23.7	23.4	24.1	24.5	24.1	24.8	24.5	25.2	25.6	
	12H	23.0	23.7	23.5	24.1	24.5	24.3	24.9	24.7	25.4	25.8	
	4H	22.6	23.4	23.1	23.8	24.2	23.4	24.2	23.9	24.6	25.0	
	6H	23.2	23.8	23.6	24.2	24.7	24.1	24.7	24.6	25.2	25.6	
	8H	23.4	23.9	23.9	24.4	24.9	24.4	25.0	24.9	25.4	25.9	
12H	12H	23.5	24.0	24.0	24.5	25.0	24.7	25.2	25.2	25.7	26.2	
	4H	22.7	23.3	23.1	23.8	24.2	23.4	24.1	23.9	24.5	24.9	
	6H	23.2	23.8	23.7	24.2	24.7	24.2	24.7	24.6	25.1	25.6	
	8H	23.5	23.9	24.0	24.4	24.9	24.5	25.0	25.0	25.4	25.9	
	Variation of the observer position for the luminaire distances S											
S = 1.0H		+0.1 / -0.2					+0.1 / -0.1					
S = 1.5H		+0.3 / -0.5					+0.2 / -0.3					
S = 2.0H		+0.5 / -0.9					+0.5 / -0.6					
Standard table		BK05					BK06					
Correction summand		6.0					7.5					
Corrected glare indices referring to 200lm Total luminous flux												

UGR diagram (SHR: 0.25)

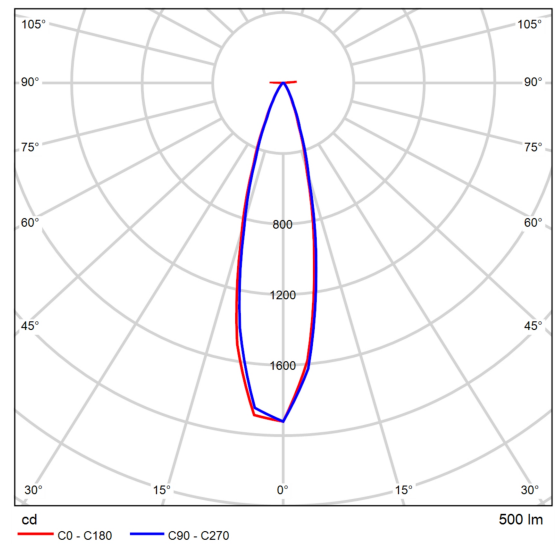
Product data sheet

NEKO - LED-Spotlight



Article No.	AFTER7 AFMI DN 5.5W 30°3000K 500lm
P	5.5 W
$\Phi_{\text{Luminaire}}$	500 lm
Luminous efficacy	90.9 lm/W
CCT	3000 K
CRI	90

Description



Polar LDC

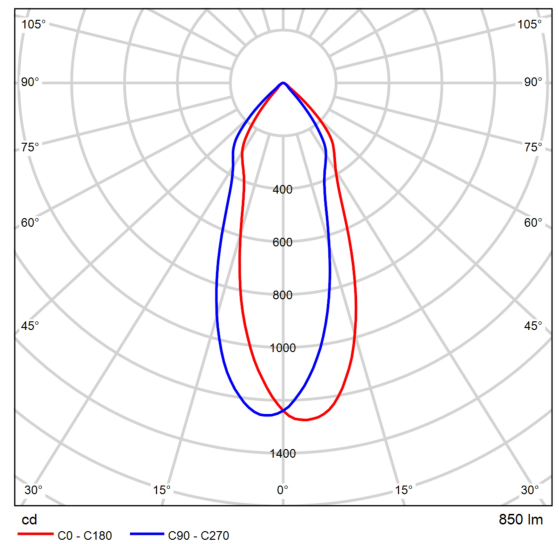
Product data sheet

NEKO - LED-Spotlight



Article No.	SKYSURFER SSRC 10W-3000K/36°
P	10.0 W
$\Phi_{\text{Luminaire}}$	850 lm
Luminous efficacy	85.0 lm/W
CCT	3000 K
CRI	90

Specification



Polar LDC